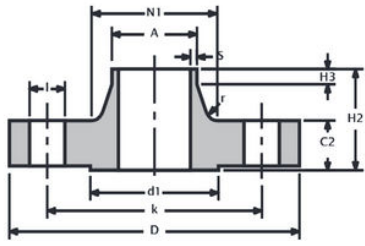


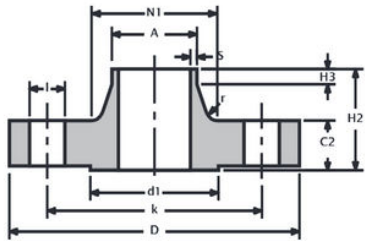
PIPE		FLANGE DATA		HUB DATA					FLANGE FACING	HEIGHT FACING	DRILLING DATA			WEIGHT
Nominal pipe size	Outside diameter	Thickness	Length through hub	Length of straight part of hub	Wall thickness	Radius	Outside diameter of neck	Diameter of hub	Diameter of facing		Number of holes	Bolt hole diameter	Diameter of bolt circle	Kg / piece
DN	D	C2	H2	H3	S	R	A	N1	D1	F1		I	K	
10	75.0	12.0	28.0	6.0	2.0	4.0	17.2	26.0	35.0	2	4	11.0	50.0	0.4
15	80.0	12.0	30.0	6.0	2.0	4.0	21.3	30.0	40.0	2	4	11.0	55.0	0.4
20	90.0	14.0	32.0	6.0	2.3	4.0	26.9	38.0	50.0	2	4	11.0	65.0	0.6
25	100.0	14.0	35.0	6.0	2.6	4.0	33.7	42.0	60.0	2	4	11.0	75.0	0.7
32	120.0	14.0	35.0	6.0	2.6	6.0	42.4	55.0	70.0	2	4	14.0	90.0	1.1
40	130.0	14.0	38.0	7.0	2.6	6.0	48.3	62.0	80.0	3	4	14.0	100.0	1.3
50	140.0	14.0	38.0	8.0	2.9	6.0	60.3	74.0	90.0	3	4	14.0	110.0	1.4
65	160.0	14.0	38.0	9.0	2.9	6.0	76.1	88.0	110.0	3	4	14.0	130.0	1.8
80	190.0	16.0	42.0	10.0	3.2	8.0	88.9	102.0	128.0	3	4	18.0	150.0	2.9
100	210.0	16.0	45.0	10.0	3.6	8.0	114.3	130.0	148.0	3	4	18.0	170.0	3.4
125	240.0	18.0	48.0	10.0	4.0	8.0	139.7	155.0	178.0	3	8	18.0	200.0	4.7
150	265.0	18.0	48.0	12.0	4.5	10.0	168.3	184.0	202.0	3	8	18.0	225.0	5.5
200	320.0	20.0	55.0	15.0	6.3	10.0	219.1	236.0	258.0	3	8	18.0	280.0	8.6
250	375.0	22.0	60.0	15.0	6.3	12.0	273.0	290.0	312.0	3	12	18.0	335.0	11.7
300	440.0	22.0	62.0	15.0	7.1	12.0	323.9	342.0	365.0	4	12	22.0	395.0	15.3
350	490.0	22.0	62.0	15.0	7.1	12.0	355.6	385.0	415.0	4	12	22.0	445.0	20.3
400	540.0	22.0	65.0	15.0	7.1	12.0	406.4	438.0	465.0	4	16	22.0	495.0	23.1
450	595.0	22.0	65.0	15.0	7.1	12.0	457.0	492.0	520.0	4	16	22.0	550.0	27.0
500	645.0	24.0	68.0	15.0	7.1	12.0	508.0	538.0	570.0	4	20	22.0	600.0	30.8
600	755.0	30.0	70.0	16.0	7.1	12.0	610.0	640.0	670.0	5	20	26.0	705.0	44.0
700	860.0	30.0	76.0	16.0	8.0	12.0	711.00	740.0	775.0	5	24	26.0	810.0	53.7
800	975.0	30.0	76.0	16.0	8.0	12.0	813.0	842.0	880.0	5	24	30.0	920.0	64.4
900	1075.0	34.0	78.0	16.0	8.0	12.0	914.0	942.0	980.0	5	24	30.0	1020.0	79.2
1000	1175.0	38.0	82.0	16.0	8.0	16.0	1016.0	1045.0	1080.0	5	28	30.0	1120.0	98.6
1200	1405.0	42.0	104.0	20.0	8.8	16.0	1219.0	1248.0	1295.0	5	32	33.0	1340.0	152.0

> Weights are approximate
> Wall thickness "s" also available acc. ASTM schedule sizes.



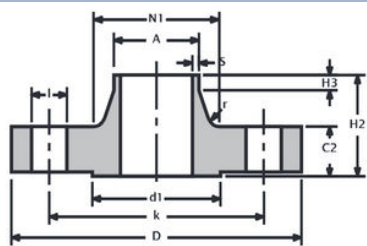
PIPE		FLANGE DATA		HUB DATA					FLANGE FACING	HEIGHT FACING	DRILLING DATA			WEIGHT
Nominal pipe size	Outside diameter	Thickness	Length through hub	Length of straight part of hub	Wall thickness	Radius	Outside diameter of neck	Diameter of hub	Diameter of facing		Number of holes	Bolt hole diameter	Diameter of bolt circle	Kg / piece
DN	D	C2	H2	H3	S	R	A	N1	D1	F1		I	K	
10	90.0	16.0	35.0	6.0	2.0	4.0	17.2	28.0	40.0	2	4	14.0	60.0	0.7
15	95.0	16.0	38.0	6.0	2.0	4.0	21.3	32.0	45.0	2	4	14.0	65.0	0.8
20	105.0	18.0	40.0	6.0	2.3	4.0	26.9	40.0	58.0	2	4	14.0	75.0	1.1
25	115.0	18.0	40.0	6.0	2.6	4.0	33.7	46.0	68.0	2	4	14.0	85.0	1.3
32	140.0	18.0	42.0	6.0	2.6	6.0	42.4	56.0	78.0	2	4	18.0	100.0	1.9
40	150.0	18.0	45.0	7.0	2.6	6.0	48.3	64.0	88.0	3	4	18.0	110.0	2.2
50	165.0	18.0	45.0	8.0	2.9	6.0	60.3	74.0	102.0	3	4	18.0	125.0	2.5
65	185.0	18.0	45.0	10.0	2.9	6.0	76.1	92.0	122.0	3	4 or 8	18.0	145.0	3.0
80	200.0	20.0	50.0	10.0	3.2	6.0	88.9	105.0	138.0	3	8	18.0	160.0	3.9
100	220.0	20.0	52.0	12.0	3.6	8.0	114.3	131.0	158.0	3	8	18.0	180.0	4.6
125	250.0	22.0	55.0	12.0	4.0	8.0	139.7	156.0	188.0	3	8	18.0	210.0	6.3
150	285.0	22.0	55.0	12.0	4.5	10.0	168.3	184.0	212.0	3	8	22.0	240.0	7.8
200	340.0	24.0	62.0	16.0	6.3	10.0	219.1	234.0	268.0	3	8	22.0	295.0	11.6
250	395.0	26.0	68.0	16.0	6.3	12.0	273.0	292.0	320.0	3	12	22.0	350.0	15.8
300	445.0	26.0	68.0	16.0	7.1	12.0	323.9	342.0	370.0	4	12	22.0	400.0	18.3
350	505.0	26.0	68.0	16.0	7.1	12.0	355.6	385.0	430.0	4	16	22.0	460.0	25.3
400	565.0	26.0	72.0	16.0	7.1	12.0	406.4	440.0	482.0	4	16	26.0	515.0	30.6
450	615.0	28.0	72.0	16.0	7.1	12.0	457.0	488.0	532.0	4	20	26.0	565.0	35.1
500	670.0	28.0	75.0	16.0	7.1	12.0	508.0	542.0	585.0	4	20	26.0	620.0	40.5
600	780.0	30.0	82.0	18.0	8.0	12.0	610.0	642.0	685.0	5	20	30.0	725.0	52.9
700	895.0	35.0	85.0	18.0	8.8	12.0	711.0	746.0	800.0	5	24	30.0	840.0	75.8
800	1015.0	38.0	96.0	18.0	8.8	12.0	813.0	850.0	905.0	5	24	33.0	950.0	102.0
900	1115.0	38.0	99.0	20.0	12.5	12.0	914.0	950.0	1005.0	5	28	33.0	1050.0	121.0
1000	1230.0	44.0	105.0	20.0	12.5	16.0	1016.0	1052.0	1110.0	5	28	36.0	1160.0	161.0
1200	1455.0	55.0	132.0	25.0	12.5	16.0	1219.0	1256.0	1330.0	5	32	39.0	1380.0	258.0

- > Weights are approximate
- > Wall thickness "s" also available acc. ASTM schedule sizes
- > DN65 available with 4 or 8 bolt holes.
- > DN10 - DN40 = PN40
- > DN50 - DN150 = PN16



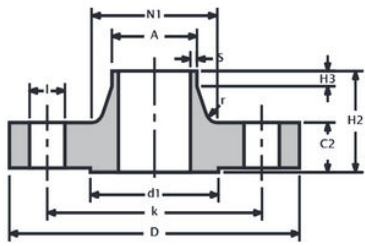
PIPE		FLANGE DATA			HUB DATA					FLANGE FACING	HEIGHT FACING	DRILLING DATA			WEIGHT
Nominal pipe size	Outside diameter	Thickness	Length through hub	Length of straight part of hub	Wall thickness	Radius	Outside diameter of neck	Diameter of hub	Diameter of facing		Number of holes	Bolt hole diameter	Diameter of bolt circle	Kg / piece	
DN	D	C2	H2	H3	S	R	A	N1	D1	F1		I	K		
10	90.0	16.0	35.0	6.0	2.0	4	17.2	28.0	40.0	2	4	14.0	60.0	0.7	
15	95.0	16.0	38.0	6.0	2.0	4	21.3	32.0	45.0	2	4	14.0	65.0	0.8	
20	105.0	18.0	40.0	6.0	2.3	4	26.9	40.0	58.0	2	4	14.0	75.0	1.1	
25	115.0	18.0	40.0	6.0	2.6	4	33.7	46.0	68.0	2	4	14.0	85.0	1.3	
32	140.0	18.0	42.0	6.0	2.6	6	42.4	56.0	78.0	2	4	18.0	100.0	1.9	
40	150.0	18.0	45.0	7.0	2.6	6	48.3	64.0	88.0	3	4	18.0	110.0	2.2	
50	165.0	18.0	45.0	8.0	2.9	6	60.3	74.0	102.0	3	4	18.0	125.0	2.5	
65	185.0	18.0	45.0	10.0	2.9	6	76.1	92.0	122.0	3	4 or 8	18.0	145.0	3.0	
80	200.0	20.0	50.0	10.0	3.2	6	88.9	105.0	138.0	3	8	18.0	160.0	3.9	
100	220.0	20.0	52.0	12.0	3.6	8	114.3	131.0	158.0	3	8	18.0	180.0	4.6	
125	250.0	22.0	55.0	12.0	4.0	8	139.7	156.0	188.0	3	8	18.0	210.0	6.3	
150	285.0	22.0	55.0	12.0	4.5	10	168.3	184.0	212.0	3	8	22.0	240.0	7.8	
200	340.0	24.0	62.0	16.0	6.3	10	219.1	235.0	268.0	3	12	22.0	295.0	11.5	
250	405.0	26.0	70.0	16.0	6.3	12	273.0	292.0	320.0	3	12	26.0	355.0	16.7	
300	460.0	28.0	78.0	16.0	7.1	12	323.9	344.0	378.0	4	12	26.0	410.0	22.1	
350	520.0	30.0	82.0	16.0	8.0	12	355.6	390.0	438.0	4	16	26.0	470.0	32.8	
400	580.0	32.0	85.0	16.0	8.0	12	406.4	445.0	490.0	4	16	30.0	525.0	41.1	
450	640.0	34.0	83.0	16.0	8.8	12	457.0	490.0	550.0	4	20	30.0	585.0	50.6	
500	715.0	36.0	84.0	16.0	8.8	12	508.0	548.0	610.0	4	20	33.0	650.0	66.2	
600	840.0	40.0	88.0	18.0	11	12	610.0	670.0	725.0	5	20	36.0	770.0	104	
700	910.0	40.0	104.0	18.0	11	12	711.0	755.0	795.0	5	24	36.0	840.0	96.5	
800	1025.0	41.0	108.0	20.0	12.5	12	813.0	855.0	900.0	5	24	39.0	950.0	122.0	
900	1125.0	48.0	118.0	20.0	12.5	12	914.0	955.0	1000.0	5	28	39.0	1050.0	155.0	
1000	1255.0	59.0	137.0	22.0	12.5	16	1016.0	1058.0	1115.0	5	28	42.0	1170.0	233.0	
1200	1485.0	78.0	160.0	30.0	14.2	16	1219.0	1262.0	1330.0	5	32	48.0	1390.0	390.0	

- > Weights are approximate
- > Wall thickness "s" also available acc. ASTM schedule sizes
- > DN65 available with 4 or 8 bolt holes.
- > DN10 - DN40 = PN40



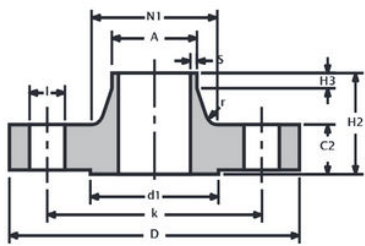
PIPE		FLANGE DATA		HUB DATA					FLANGE FACING	HEIGHT FACING	DRILLING DATA			WEIGHT
Nominal pipe size	Outside diameter	Thickness	Length through hub	Length of straight part of hub	Wall thickness	Radius	Outside diameter of neck	Diameter of hub	Diameter of facing		Number of holes	Bolt hole diameter	Diameter of bolt circle	Kg / piece
DN	D	C2	H2	H3	S	R	A	N1	D1	F1		I	K	
10	90.0	16.0	35.0	6.0	2.0	4.0	17.2	28.0	40.0	2	4	14.0	60.0	0.7
15	95.0	16.0	38.0	6.0	2.0	4.0	21.3	32.0	45.0	2	4	14.0	65.0	0.8
20	105.0	18.0	40.0	6.0	2.3	4.0	26.9	40.0	58.0	2	4	14.0	75.0	1.1
25	115.0	18.0	40.0	6.0	2.6	4.0	33.7	46.0	68.0	2	4	14.0	85.0	1.3
32	140.0	18.0	42.0	6.0	2.6	6.0	42.4	56.0	78.0	2	4	18.0	100.0	1.9
40	150.0	18.0	45.0	7.0	2.6	6.0	48.3	64.0	88.0	3	4	18.0	110.0	2.2
50	165.0	20.0	48.0	8.0	2.9	6.0	60.3	75.0	102.0	3	4	18.0	125.0	2.9
65	185.0	22.0	52.0	10.0	2.9	6.0	76.1	90.0	122.0	3	8	18.0	145.0	3.7
80	200.0	24.0	58.0	12.0	3.2	8.0	88.9	105.0	138.0	3	8	18.0	160.0	4.8
100	235.0	24.0	65.0	12.0	3.6	8.0	114.3	134.0	162.0	3	8	22.0	190.0	6.5
125	270.0	26.0	68.0	12.0	4.0	8.0	139.7	162.0	188.0	3	8	26.0	220.0	8.9
150	300.0	28.0	75.0	12.0	4.5	10.0	168.3	192.0	218.0	3	8	26.0	250.0	11.7
200	360.0	30.0	80.0	16.0	6.3	10.0	219.1	244.0	278.0	3	12	26.0	310.0	17.1
250	425.0	32.0	88.0	18.0	7.1	12.0	273.0	298.0	335.0	3	12	30.0	370.0	24.3
300	485.0	34.0	92.0	18.0	8.0	12.0	323.9	352.0	395.0	4	16	30.0	430.0	31.8
350	555.0	38.0	100.0	20.0	8.0	12.0	355.6	398.0	450.0	4	16	33.0	490.0	48.8
400	620.0	40.0	110.0	20.0	8.8	12.0	406.4	452.0	505.0	4	16	36.0	550.0	63.3
450	670.0	46.0	110.0	20.0	8.8	12.0	457.0	500.0	555.0	4	20	36.0	600.0	76.0
500	730.0	48.0	125.0	20.0	10.0	12.0	508.0	558.0	615.0	4	20	36.0	660.0	97.0
600	845.0	48.0	125.0	20.0	12.5	12.0	610.0	660.0	720.0	5	20	39.0	770.0	121.0
700	960.0	50.0	129.0	20.0	14.2	12.0	711.0	760.0	820.0	5	24	42.0	875.0	155.0
800	1085.0	53.0	138.0	22.0	16.0	12.0	813.0	864.0	930.0	5	24	48.0	990.0	205.0
900	1185.0	57.0	148.0	24.0	17.5	12.0	914.0	968.0	1030.0	5	28	48.0	1090.0	249.0
1000	1320.0	63.0	160.0	24.0	20.0	16.0	1016.0	1070.0	1140.0	5	28	56.0	1210.0	338.0

- > Weights are approximate
- > Wall thickness "s" also available acc. ASTM schedule sizes
- > DN10 - DN150 = PN40



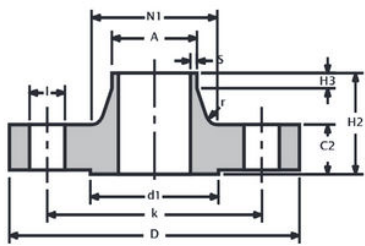
PIPE		FLANGE DATA		HUB DATA					FLANGE FACING	HEIGHT FACING	DRILLING DATA			WEIGHT
Nominal pipe size	Outside diameter	Thickness	Length through hub	Length of straight part of hub	Wall thickness	Radius	Outside diameter of neck	Diameter of hub	Diameter of facing		Number of holes	Bolt hole diameter	Diameter of bolt circle	Kg / piece
DN	D	C2	H2	H3	S	R	A	N1	D1	F1		I	K	
10	90.0	16.0	35.0	6.0	2.0	4.0	17.2	28.0	40.0	2	4	14.0	60.0	0.7
15	95.0	16.0	38.0	6.0	2.0	4.0	21.3	32.0	45.0	2	4	14.0	65.0	0.8
20	105.0	18.0	40.0	6.0	2.3	4.0	26.9	40.0	58.0	2	4	14.0	75.0	1.1
25	115.0	18.0	40.0	6.0	2.6	4.0	33.7	46.0	68.0	2	4	14.0	85.0	1.3
32	140.0	18.0	42.0	6.0	2.6	6.0	42.4	56.0	78.0	2	4	18.0	100.0	1.9
40	150.0	18.0	45.0	7.0	2.6	6.0	48.3	64.0	88.0	3	4	18.0	110.0	2.2
50	165.0	20.0	48.0	8.0	2.9	6.0	60.3	75.0	102.0	3	4	18.0	125.0	2.9
65	185.0	22.0	52.0	10.0	2.9	6.0	76.1	90.0	122.0	3	8	18.0	145.0	3.7
80	200.0	24.0	58.0	12.0	3.2	8.0	88.9	105.0	138.0	3	8	18.0	160.0	4.8
100	235.0	24.0	65.0	12.0	3.6	8.0	114.3	134.0	162.0	3	8	22.0	190.0	6.5
125	270.0	26.0	68.0	12.0	4.0	8.0	139.7	162.0	188.0	3	8	26.0	220.0	8.9
150	300.0	28.0	75.0	12.0	4.5	10.0	168.3	192.0	218.0	3	8	26.0	250.0	11.7
200	375.0	34.0	88.0	16.0	6.3	10.0	219.1	244.0	285.0	3	12	30.0	320.0	21.0
250	450.0	38.0	105.0	18.0	7.1	12.0	273.0	306.0	345.0	3	12	33.0	385.0	34.2
300	515.0	42.0	115.0	18.0	8.0	12.0	323.9	362.0	410.0	4	16	33.0	450.0	47.6
350	580.0	46.0	125.0	20.0	8.8	12.0	355.6	408.0	465.0	4	16	36.0	510.0	69.3
400	660.0	50.0	135.0	20.0	11.0	12.0	406.4	462.0	535.0	4	16	39.0	585.0	98.0
450	685.0	57.0	135.0	20.0	12.5	12.0	457.0	500.0	560.0	4	20	39.0	610.0	105.0
500	755.0	57.0	140.0	20.0	14.2	12.0	508.0	562.0	615.0	4	20	42.0	670.0	130.0
600	890.0	72.0	150.0	20.0	16.0	12.0	610.0	666.0	735.0	5	20	48.0	795.0	209.0

- > Weights are approximate
- > Wall thickness "s" also available acc. ASTM schedule sizes



PIPE		FLANGE DATA		HUB DATA					FLANGE FACING	HEIGHT FACING	DRILLING DATA			WEIGHT
Nominal pipe size	Outside diameter	Thickness	Length through hub	Length of straight part of hub	Wall thickness	Radius	Outside diameter of neck	Diameter of hub	Diameter of facing		Number of holes	Bolt hole diameter	Diameter of bolt circle	Kg / piece
DN	D	C2	H2	H3	S	R	A	N1	D1	F1		I	K	
10	100.0	20.0	45.0	6.0	2.0	4.0	17.2	32.0	40.0	2	4	14.0	70.0	1.1
15	105.0	20.0	45.0	6.0	2.0	4.0	21.3	34.0	45.0	2	4	14.0	75.0	1.2
20	130.0	22.0	48.0	8.0	2.6	4.0	26.9	42.0	58.0	2	4	18.0	90.0	2.0
25	140.0	24.0	58.0	8.0	2.6	4.0	33.7	52.0	68.0	2	4	18.0	100.0	2.6
32	155.0	24.0	60.0	8.0	2.9	6.0	42.4	62.0	78.0	2	4	22.0	110.0	3.2
40	170.0	26.0	62.0	10.0	2.9	6.0	48.3	70.0	88.0	3	4	22.0	125.0	4.1
50	180.0	26.0	62.0	10.0	2.9	6.0	60.3	82.0	102.0	3	4	22.0	135.0	4.5
65	205.0	26.0	68.0	12.0	3.2	6.0	76.1	98.0	122.0	3	8	22.0	160.0	5.6
80	215.0	28.0	72.0	12.0	3.6	8.0	88.9	112.0	138.0	3	8	22.0	170.0	6.7
100	250.0	30.0	78.0	12.0	4	8.0	114.3	138.0	162.0	3	8	26.0	200.0	9.3
125	295.0	34.0	88.0	12.0	4.5	8.0	139.7	168.0	188.0	3	8	30.0	240.0	14.5
150	345.0	36.0	95.0	12.0	5.6	10.0	168.3	202.0	218.0	3	8	33.0	280.0	21.4
200	415.0	42.0	110.0	16.0	7.1	10.0	219.1	256.0	285.0	3	12	36.0	345.0	34.1
250	470.0	46.0	125.0	18.0	8.8	12.0	273.0	316.0	345.0	3	12	36.0	400.0	48.3
300	530.0	52.0	140.0	18.0	11.0	12.0	323.9	372.0	410.0	4	16	36.0	460.0	67.5
350	600.0	56.0	150.0	20.0	12.5	12.0	355.6	420.0	465.0	4	16	39.0	525.0	97.8
400	670.0	60.0	160.0	20.0	14.2	12.0	406.4	475.0	535.0	4	16	42.0	585.0	129.0

- > Weights are approximate
- > Wall thickness "s" also available acc. ASTM schedule sizes
- > DN10 - DN40 = PN100



PIPE		FLANGE DATA		HUB DATA					FLANGE FACING	HEIGHT FACING	DRILLING DATA			WEIGHT
Nominal pipe size	Outside diameter	Thickness	Length through hub	Length of straight part of hub	Wall thickness	Radius	Outside diameter of neck	Diameter of hub	Diameter of facing		Number of holes	Bolt hole diameter	Diameter of bolt circle	Kg / piece
DN	D	C2	H2	H3	S	R	A	N1	D1	F1		I	K	
10	100.0	20.0	45.0	6.0	2.0	4.0	17.2	32.0	40.0	2	4	14.0	70.0	1.1
15	105.0	20.0	45.0	6.0	2	4.0	21.3	34.0	45.0	2	4	14.0	75.0	1.2
20	130.0	22.0	48.0	8.0	2,6	4.0	26.9	42.0	58.0	2	4	18.0	90.0	2.0
25	140.0	24.0	58.0	8.0	2,6	4.0	33.7	52.0	68.0	2	4	18.0	100.0	2.6
32	155.0	24.0	60.0	8.0	2,9	6.0	42.4	62.0	78.0	2	4	22.0	110.0	3.2
40	170.0	26.0	62.0	10.0	2,9	6.0	48.3	70.0	88.0	3	4	22.0	125.0	4.1
50	195.0	28.0	68.0	10.0	3,2	6.0	60.3	90.0	102.0	3	4	26.0	145.0	5.8
65	220.0	30.0	76.0	12.0	3,6	6.0	76.1	108.0	122.0	3	8	26.0	170.0	7.6
80	230.0	32.0	78.0	12.0	4	8.0	88.9	120.0	138.0	3	8	26.0	180.0	8.8
100	265.0	36.0	90.0	12.0	5	8.0	114.3	150.0	162.0	3	8	30.0	210.0	13.1
125	315.0	40.0	105.0	12.0	6.3	8.0	139.7	180.0	188.0	3	8	33.0	250.0	21.0
150	355.0	44.0	115.0	12.0	7,1	10.0	168.3	210.0	218.0	3	12	33.0	290.0	28.3
200	430.0	52.0	130.0	16.0	10	10.0	219.1	278.0	285.0	3	12	36.0	360.0	50.2
250	505.0	60.0	157.0	18.0	12,5	12.0	273.0	340.0	345.0	3	12	39.0	430.0	81.4
300	585.0	68.0	170.0	18.0	14,2	12.0	323.9	400.0	410.0	4	16	42.0	500.0	118.0
350	655.0	74.0	189.0	20.0	16	12.0	355.6	460.0	465.0	4	16	48.0	560.0	169.0

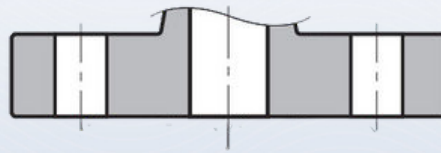
- > Weights are approximate
- > Wall thickness "s" also available acc. ASTM schedule sizes

FLANGE FACING TYPES

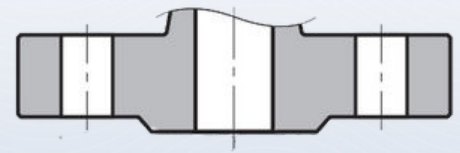
EN 1092-1



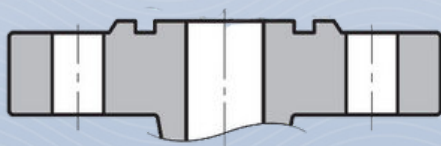
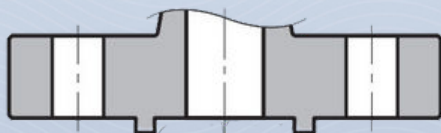
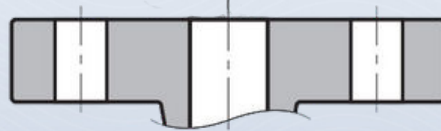
TYPE A	FLAT FACE
TYPE B	RAISED FACE
TYPE C	TONGUE
TYPE D	GROOVE
TYPE E	SPIGOT
TYPE F	RECESS
TYPE G	O-RING SPIGOT
TYPE H	O-RING GROOVE



TYPE A - FLAT FACE



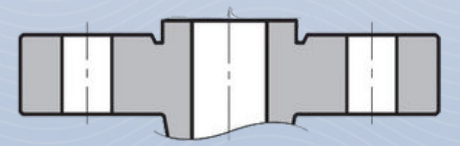
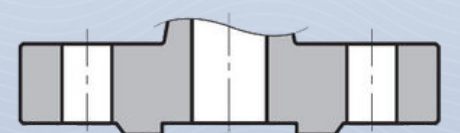
TYPE B - RAISED FACE



TYPE C AND D -
TONGUE AND GROOVE FACE



TYPE E AND F -
SPIGOT AND RECESS FACE



TYPE G AND H -
O-RING SPIGOT
AND
O- GROOVE FACE

FACING TYPES	METHODE OF MACHINING	RADIUS OF TOOL NOSE MM	RA μm		RZ μm	
		min.	min.	max.	min.	max.
A, B1 b, E, F	Turning c	1.0	3.2	12.5	12.5	50
B2b, C, D, G, H	Turning c	-	0.8	3.2	3.2	12.5

For certain applications, e.g. low temperatures gases, it may be necessary to stipulate closer controle to the surface finish.

A	Ra and Rz are defined in EN ISO 4287
B	Types B1 and B2 are raised face (type B) flanges with different specified surface roughness values.
B1	Standard facing for all PN numbers.
B2	Only if agreed between the purchser and the flange manufacturer.
C	The term "turning" includes any method of machine operation producing either serrated concentric or serrated spiral grooves.