

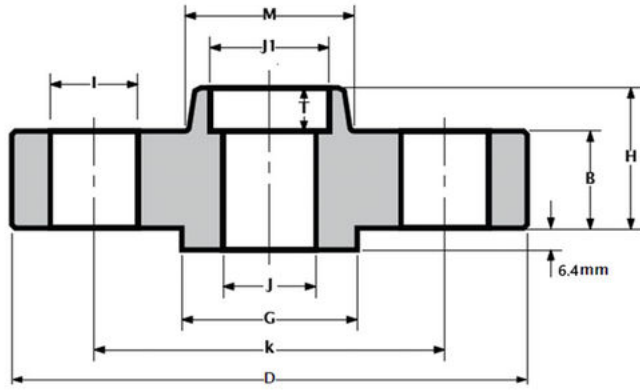
> Dimension J corresponds to the inside diameter.
Values mentioned assume 40S/Standard wall thickness.
> Weights are approximate

PIPE	FLANGE DATA						HUB DATA	RAISED FACE	DRILLING DATA			WEIGHT
	Nominal pipe size	Outside diameter	Thickness min.	Length through hub	Inside diameter	Socket diameter			Depth of the socket	FACE DIAMETER	Number of holes	
NPS	D	B	H	J	J1	T	M	G		I	k	
1/2"	89	9.6	14	15.8	22.2	10	30	34.9	4	15.88	60.3	0.47
3/4"	99	11.2	14	20.9	27.7	11	38	42.9	4	15.88	69.9	0.59
1"	108	12.7	16	26.6	34.5	13	49	50.8	4	15.88	79.4	0.87
1 1/4"	117	14.3	19	35.1	43.2	14	59	63.5	4	15.88	88.9	1.11
1 1/2"	127	15.9	21	40.9	49.5	16	65	73.0	4	15.88	98.4	1.45
2"	152	17.5	24	52.5	61.9	18	78	92.1	4	19.05	120.7	2.33
2 1/2"	178	20.7	27	62.7	74.6	19	90	104.8	4	19.05	139.7	3.55
3"	190	22.3	29	77.9	90.7	21	108	127.0	4	19.05	152.4	4.02

> Dimension J corresponds to the inside diameter.
Values mentioned assume 40S/Standard wall thickness.
> Weights are approximate

ASTM/ASME A/SA182 - 300LBS

PIPE	FLANGE DATA						HUB DATA	RAISED FACE	DRILLING DATA			WEIGHT
	Nominal pipe size	Outside diameter	Thickness min.	Length through hub	Inside diameter	Socket diameter			Depth of the socket	FACE DIAMETER	Number of holes	
NPS	D	B	H	J	J1	T	M	G		I	k	
1/2"	95	12.7	21	15.8	22.2	10	38	34.9	4	15.88	66.7	0.70
3/4"	117	14.3	24	20.9	27.7	11	48	42.9	4	19.05	82.6	1.20
1"	124	15.9	25	26.6	34.5	13	54	50.8	4	19.05	88.9	1.40
1 1/4"	133	17.5	25	35.1	43.2	14	64	63.5	4	19.05	98.4	1.90
1 1/2"	155	19.1	29	40.9	49.5	16	70	73.0	4	22.23	114.3	2.80
2"	165	20.7	32	52.5	61.9	17	84	92.1	8	19.05	127.0	3.30
2 1/2"	190	23.9	37	62.7	74.6	19	100	104.8	8	22.23	149.2	4.60
3"	210	27.0	41	77.9	90.7	21	117	127.0	8	22.23	168.3	6.30



> Weights are approximate

PIPE	FLANGE DATA						HUB DATA	RAISED FACE	DRILLING DATA			WEIGHT
	Nominal pipe size	Outside diameter	Thickness min.	Length through hub	Inside diameter	Socket diameter			Depth of the socket	FACE DIAMETER	Number of holes	
NPS	D	B	H	J	J1	T	M	G		I	k	Kg / piece
1/2"	95	14.3	22	To be specified by Purchaser	22.2	10	38	34.9	4	15.88	66.7	0.91
3/4"	117	15.9	25		27.7	11	48	42.9	4	19.05	82.6	1.36
1"	124	17.5	27		34.5	13	54	50.8	4	19.05	88.9	1.81
1 1/4"	133	20.7	29		43.2	14	64	63.5	4	19.05	98.4	2.60
1 1/2"	155	22.3	32		49.5	16	70	73.0	4	22.23	114.3	3.18
2"	165	25.4	37		61.9	18	84	92.1	8	19.05	127.0	3.90
2 1/2"	190	28.6	41		74.6	19	100	104.8	8	22.23	149.2	5.90
3"	210	31.8	46		90.7	21	117	127.0	8	22.23	168.3	7.40

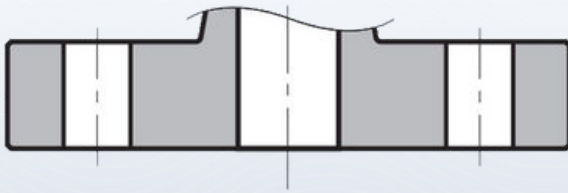
ASTM/ASME A/SA182 - 1500LBS

> Weights are approximate

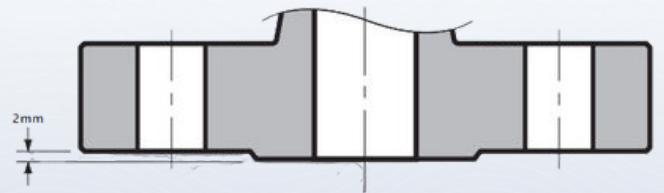
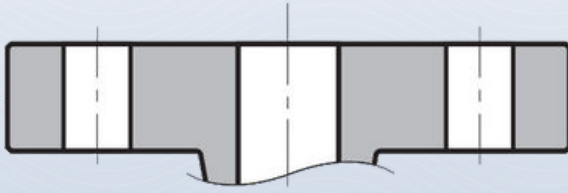
PIPE	FLANGE DATA						HUB DATA	RAISED FACE	DRILLING DATA			WEIGHT
	Nominal pipe size	Outside diameter	Thickness min.	Length through hub	Inside diameter	Socket diameter			Depth of the socket	FACE DIAMETER	Number of holes	
NPS	D	B	H	J	J1	T	M	G		I	k	Kg / piece
1/2"	121	22.3	32	To be specified by Purchaser	22.2	10	38	34.9	4	22.23	82.6	1.81
3/4"	130	25.4	35		27.7	11	44	42.9	4	22.23	88.9	2.81
1"	149	28.6	41		34.5	13	52	50.8	4	25.40	101.6	3.61
1 1/4"	159	28.6	41		43.2	14	64	63.5	4	25.40	111.1	4.99
1 1/2"	178	31.8	44		49.5	16	70	73.0	4	28.58	123.8	6.76
2"	216	38.1	57		61.9	18	105	92.1	8	25.40	165.1	10.89
2 1/2"	244	41.3	64		74.6	19	124	104.8	8	28.58	190.5	16.34

FLANGE FACING TYPES

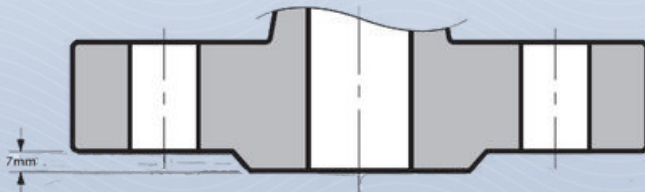
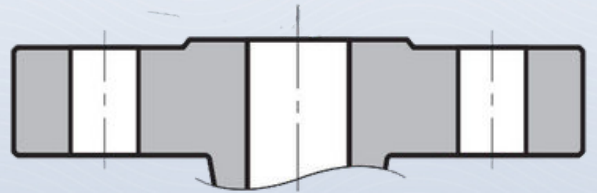
ASTM A182 ASME B16.5



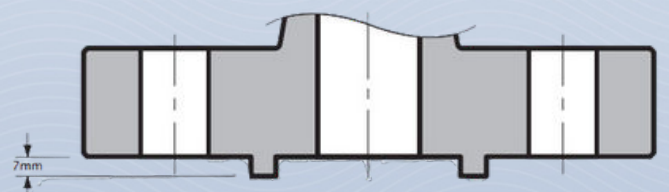
FLAT FACE



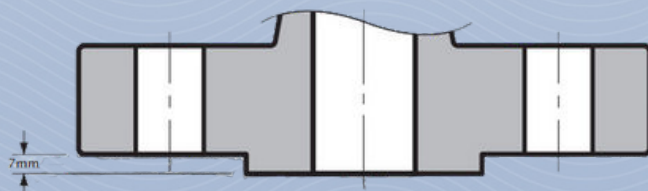
RAISED FACE (150 - 300LBS)



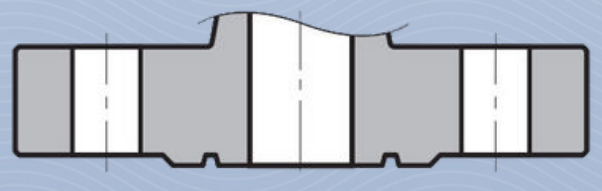
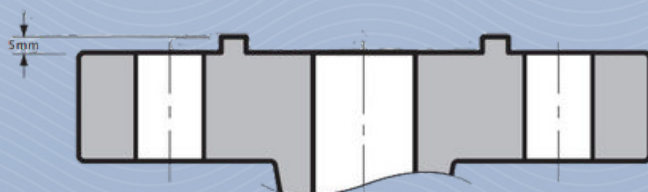
RAISED FACE (400LBS AND UP)



TONGUE AND GROOVE FACE



MALE AND FEMALE FACE



RING TYPE JOINT FACE

