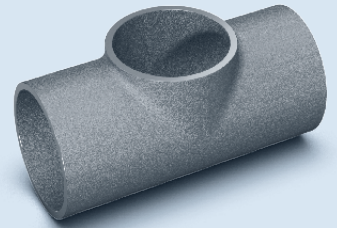
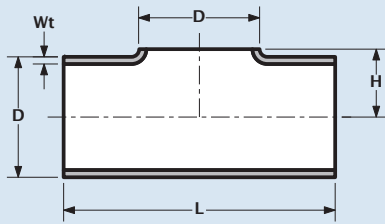




EN / ISO



Tee piece									
Nominal Pipe Size	Outside Diameter	Wall thickness		Short pattern			Long pattern		
				Length	Height	Weight	Length	Height	Weight
NPS	D	Wt	L	H	kg	L	H	kg	
-	18.0	1.5	-	-	-	50.0	25.0	0.04	
-	20.0	1.5	-	-	-	50.0	25.0	0.04	
15	21.3	1.6	-	-	-	50.0	25.0	0.04	
15	21.3	2.0	51.0	12.0	0.04	50.0	25.0	0.05	
15	21.3	3.2	-	-	-	50.0	25.0	0.08	
15	21.3	4.0	-	-	-	50.0	25.0	0.10	
-	23.0	1.5	51.0	13.0	0.04	50.0	25.0	0.05	
-	25.0	1.5	57.0	14.0	0.05	56.0	28.0	0.06	
20	26.9	1.6	-	-	-	58.0	29.0	0.06	
20	26.9	2.0	57.0	15.0	0.06	58.0	29.0	0.08	
20	26.9	3.2	-	-	-	58.0	29.0	0.13	
20	26.9	4.0	-	-	-	58.0	29.0	0.16	
-	28.0	1.5	57.0	15.5	0.05	56.0	28.0	0.07	
-	30.0	1.5	76.0	17.0	0.08	76.0	38.0	0.11	
-	30.0	2.0	76.0	17.0	0.09	76.0	38.0	0.12	
-	33.0	1.5	76.0	19.0	0.11	76.0	38.0	0.14	
25	33.7	1.6	-	-	-	76.0	38.0	0.11	
25	33.7	2.0	76.0	19.0	0.11	76.0	38.0	0.14	
25	33.7	2.3	-	-	-	76.0	38.0	0.16	
25	33.7	3.0	76.0	19.0	0.17	76.0	38.0	0.22	
25	33.7	3.2	-	-	-	76.0	38.0	0.24	
25	33.7	4.5	-	-	-	76.0	38.0	0.30	
-	34.0	2.0	76.0	19.0	0.11	76.0	38.0	0.15	
-	38.0	1.5	95.0	20.5	0.14	94.0	47.0	0.18	
-	40.0	1.5	95.0	22.0	0.15	-	-	-	
32	42.4	1.6	-	-	-	96.0	48.0	0.18	
32	42.4	2.0	95.0	24.0	0.17	96.0	48.0	0.23	
32	42.4	2.6	-	-	-	96.0	48.0	0.30	
32	42.4	3.0	95.0	24.0	0.26	96.0	48.0	0.34	
32	42.4	3.6	-	-	-	96.0	48.0	0.41	
32	42.4	5.0	-	-	-	96.0	48.0	0.57	
-	43.0	1.5	95.0	23.8	0.17	94.0	47.0	0.22	
-	44.0	2.0	95.0	25.6	0.17	94.0	47.0	0.23	
-	44.5	1.5	95.0	25.6	0.17	94.0	47.0	0.23	
-	44.5	2.0	-	-	-	94.0	47.0	0.24	
40	48.3	1.6	-	-	-	114.0	57.0	0.25	
40	48.3	2.0	114.0	26.0	0.23	114.0	57.0	0.31	
40	48.3	2.6	-	-	-	114.0	57.0	0.40	
40	48.3	3.0	114.0	26.0	0.35	114.0	57.0	0.46	
40	48.3	3.6	-	-	-	114.0	57.0	0.55	
40	48.3	5.0	-	-	-	114.0	57.0	0.77	
-	50.8	1.5	114.0	28.00	0.18	114.0	57.0	0.24	
-	53.0	1.5	114.0	30.00	0.20	114.0	57.0	0.29	
-	54.0	2.0	114.0	30.00	0.26	114.0	57.0	0.34	
50	60.3	1.6	100.0	33.15	0.22	128.0	64.0	0.33	
50	60.3	2.0	100.0	33.15	0.27	128.0	64.0	0.41	

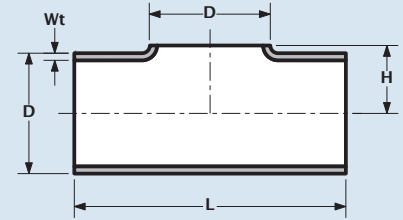
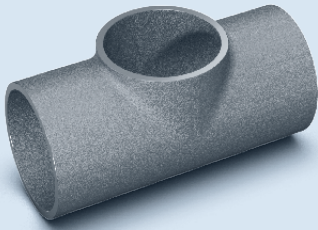
continued on next page

Tee stuk
Tee piece
Té
Tee stück



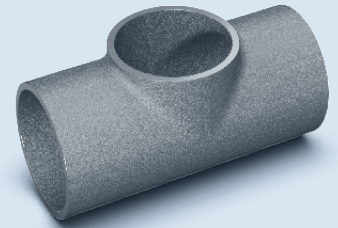
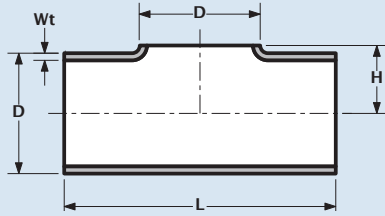
DN15 - DN600
short / long pattern

EN / ISO



Tee piece									
Nominal Pipe Size	Outside Diameter	Wall thickness	Short pattern			Long pattern			
			Length	Height	Weight	Length	Height	Weight	
NPS	D	Wt	L	H	kg	L	H	kg	
50	60.3	2.3	100.0	33.15	0.31	128.0	64.0	0.47	
50	60.3	2.9	100.0	33.15	0.39	128.0	64.0	0.59	
50	60.3	3.0	127.0	34.00	0.46	128.0	64.0	0.61	
50	60.3	4.0	100.0	33.15	0.54	128.0	64.0	0.81	
50	60.3	5.6	100.0	33.15	0.76	128.0	64.0	1.14	
-	63.5	1.5	127.0	35.00	0.27	128.0	64.0	0.35	
-	64.0	2.0	128.0	35.00	0.36	128.0	64.0	0.43	
-	69.0	2.0	127.0	38.00	0.37	128.0	64.0	0.48	
-	73.0	1.5	152.0	40.00	0.37	152.0	76.0	0.58	
-	74.0	2.0	152.0	40.00	0.49	152.0	76.0	0.59	
-	76.0	1.5	152.0	42.00	0.52	152.0	76.0	0.67	
65	76.1	1.6	130.0	42.05	0.32	152.0	76.0	0.48	
65	76.1	2.0	152.0	42.00	0.45	152.0	76.0	0.60	
65	76.1	2.3	130.0	42.05	0.48	152.0	76.0	0.69	
65	76.1	2.6	130.0	42.05	0.52	152.0	76.0	0.78	
65	76.1	2.9	130.0	42.05	0.58	152.0	76.0	0.87	
65	76.1	3.0	152.0	42.00	0.71	152.0	76.0	0.94	
65	76.1	5.0	130.0	42.05	1.05	152.0	76.0	1.57	
65	76.1	7.1	130.0	42.05	1.49	152.0	76.0	2.23	
-	84.0	2.0	171.0	46.50	0.63	170.0	85.0	0.77	
-	86.0	3.0	171.0	47.00	0.95	170.0	85.0	1.16	
80	88.9	2.0	160.0	49.45	0.57	172.0	86.0	0.86	
80	88.9	2.3	160.0	49.45	0.66	172.0	86.0	0.99	
80	88.9	2.9	160.0	49.45	0.83	172.0	86.0	1.25	
80	88.9	3.0	171.0	48.50	1.00	172.0	86.0	1.26	
80	88.9	3.2	160.0	49.45	0.89	172.0	86.0	1.34	
80	88.9	5.6	160.0	49.45	1.57	172.0	86.0	2.35	
80	88.9	8.0	160.0	49.45	2.24	172.0	86.0	3.36	
-	104.0	2.0	210.0	56.30	0.95	210.0	105.0	1.19	
-	106.0	3.0	210.0	56.50	1.43	210.0	105.0	1.47	
100	114.3	2.0	200.0	64.15	0.89	210.0	105.0	1.27	
100	114.3	2.6	200.0	64.15	1.16	210.0	105.0	1.65	
100	114.3	2.9	200.0	64.15	1.29	210.0	105.0	1.84	
100	114.3	3.0	210.0	63.00	1.58	210.0	105.0	1.98	
100	114.3	3.6	200.0	64.15	1.67	210.0	105.0	2.38	
100	114.3	6.3	200.0	64.15	2.91	210.0	105.0	4.16	
100	114.3	8.8	200.0	64.15	4.07	210.0	105.0	5.81	
-	129.0	2.0	248.0	70.00	1.42	548.0	124.0	1.76	
-	131.0	3.0	248.0	72.00	2.12	548.0	124.0	2.99	
125	139.7	2.0	250.0	77.85	2.23	148.0	124.0	1.86	
125	139.7	2.6	250.0	77.85	2.90	148.0	124.0	2.42	
125	139.7	3.0	248.0	76.00	3.35	148.0	124.0	2.79	
125	139.7	3.2	250.0	77.85	3.58	148.0	124.0	2.98	
125	139.7	4.0	250.0	77.85	4.46	148.0	124.0	3.72	
125	139.7	6.3	250.0	77.85	7.03	148.0	124.0	5.86	
125	139.7	10.0	250.0	77.85	11.16	148.0	124.0	9.30	

continued on next page



Tee piece									
Nominal Pipe Size	Outside Diameter	Wall thickness	Short pattern			Long pattern			
			Length	Height	Weight	Length	Height	Weight	
NPS	D	Wt	L	H	kg	L	H	kg	
-	154.0	2.0	286.0	84.00	1.56	286.0	143.0	2.03	
-	156.0	3.0	286.0	85.00	2.09	286.0	143.0	2.99	
150	168.3	2.0	300.0	94.15	2.68	286.0	143.0	2.98	
150	168.3	2.6	300.0	94.15	3.41	286.0	143.0	3.76	
150	168.3	3.0	284.0	92.00	3.05	286.0	143.0	3.81	
150	168.3	3.2	300.0	94.15	3.65	286.0	143.0	4.06	
150	168.3	4.5	300.0	94.15	5.15	286.0	143.0	5.72	
150	168.3	7.1	300.0	94.15	8.12	286.0	143.0	9.02	
150	168.3	11.0	300.0	94.15	12.57	286.0	143.0	13.97	
-	204.0	2.0	356.0	110.00	3.79	356.0	178.0	3.84	
-	206.0	3.0	356.0	110.00	4.69	356.0	178.0	5.72	
200	219.1	2.0	400.0	121.55	3.91	356.0	178.0	4.34	
200	219.1	2.6	400.0	121.55	5.08	356.0	178.0	5.64	
200	219.1	3.0	358.0	122.00	4.69	356.0	178.0	6.51	
200	219.1	3.6	400.0	121.55	7.03	356.0	178.0	7.81	
200	219.1	6.3	400.0	121.55	12.30	356.0	178.0	13.67	
200	219.1	8.0	400.0	121.55	15.62	356.0	178.0	17.36	
200	219.1	12.5	400.0	121.55	24.42	356.0	178.0	27.13	
-	256.0	3.0	500.0	264.00	9.35	-	-	-	
250	273.0	2.0	500.0	149.50	6.31	432.0	216.0	7.01	
250	273.0	3.0	433.0	151.00	7.95	-	-	-	
250	273.0	3.6	500.0	149.50	11.36	432.0	216.0	12.62	
250	273.0	4.0	500.0	149.50	12.63	432.0	216.0	14.03	
250	273.0	6.3	500.0	149.50	19.88	432.0	216.0	22.09	
250	273.0	10.0	500.0	149.50	31.55	432.0	216.0	35.06	
-	306.0	3.0	600.0	316.00	13.40	-	-	-	
300	323.9	2.6	600.0	176.95	17.28	508.0	254.0	15.03	
300	323.9	3.0	508.0	177.00	-	-	-	-	
300	323.9	4.0	600.0	176.95	26.59	508.0	254.0	23.12	
300	323.9	4.5	600.0	176.95	29.91	508.0	254.0	26.01	
300	323.9	7.1	600.0	176.95	47.20	508.0	254.0	41.04	
300	323.9	10.0	600.0	176.95	66.47	508.0	254.0	57.80	
350	355.6	2.6	700.0	194.80	26.42	558.0	279.0	22.97	
350	355.6	4.0	700.0	194.80	40.63	558.0	279.0	35.33	
350	355.6	5.0	700.0	194.80	50.78	558.0	279.0	44.16	
350	355.6	8.0	700.0	194.80	81.26	558.0	279.0	70.66	
350	355.6	11.0	700.0	194.80	111.73	558.0	279.0	97.16	
400	406.4	2.6	800.0	223.20	39.31	610.0	305.0	32.76	
400	406.4	4.0	800.0	223.20	60.48	610.0	305.0	50.40	
400	406.4	5.0	800.0	223.20	75.60	610.0	305.0	63.00	
400	406.4	8.8	800.0	223.20	133.06	610.0	305.0	110.88	
400	406.4	12.5	800.0	223.20	189.00	610.0	305.0	157.50	
450	457.0	3.2	-	-	-	686.0	343.0	53.02	
450	457.0	4.0	-	-	-	686.0	343.0	66.27	
450	457.0	5.0	-	-	-	686.0	343.0	82.84	
450	457.0	10.0	-	-	-	686.0	343.0	165.68	

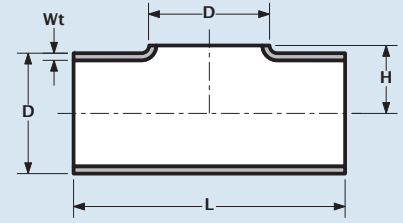
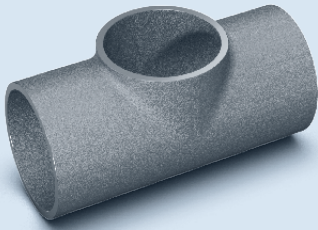
continued on next page

Tee stuk
Tee piece
Té
Tee stück



DN15 - DN600
short / long pattern

EN / ISO



Tee piece

Nominal Pipe Size	Outside Diameter D	Wall thickness Wt	Short pattern			Long pattern		
			Length L	Height H	Weight kg	Length L	Height H	Weight kg
500	508.0	3.2	-	-	-	762.0	381.0	69.76
500	508.0	5.0	-	-	-	762.0	381.0	109.00
500	508.0	5.6	-	-	-	762.0	381.0	122.08
500	508.0	11.0	-	-	-	762.0	381.0	239.80
600	610.0	3.2	-	-	-	864.0	432.0	112.32
600	610.0	5.6	-	-	-	864.0	432.0	196.56
600	610.0	6.3	-	-	-	864.0	432.0	211.13
600	610.0	12.5	-	-	-	864.0	432.0	438.75