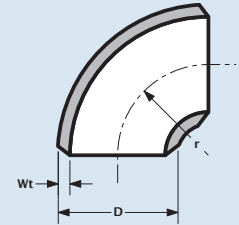
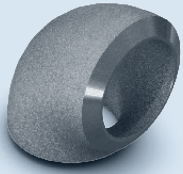


Bocht 90° SR
Elbow 90° SR
Coude 90° SR
Bogen 90° SR



1" - 24" = ASME B16.9

ASTM/ASME A/SA403



Elbow													
Nominal pipe size	Outside diameter	Radius	sch10s		sch40s/STD		sch80s/XS		sch160		schXXS		
			NPS	D	r	Wt	kg/pc	Wt	kg/pc	Wt	kg/pc	Wt	kg/pc
1"	33.40	25.40	2.77	0.11	3.38	0.13	4.55	0.18	6.35	0.25	9.09	0.29	
1 1/4"	42.16	31.80	2.77	0.15	3.56	0.20	4.85	0.27	6.38	0.36	7.88	0.53	
1 1/2"	48.26	38.10	2.77	0.22	3.68	0.30	5.08	0.41	7.14	0.58	10.16	0.75	
2"	60.33	50.80	2.77	0.38	3.91	0.53	5.54	0.75	8.74	1.18	11.07	1.42	
2 1/2"	73.03	63.50	3.05	0.62	5.16	1.06	7.01	1.43	9.53	1.94	14.02	2.69	
3"	88.90	76.20	3.05	0.90	5.49	1.62	7.62	2.24	11.13	3.27	15.24	4.37	
3 1/2"	101.60	88.90	3.05	1.23	5.74	2.37	8.08	3.34	-	-	-	-	
4"	114.30	101.60	3.05	1.55	6.02	3.10	8.56	4.42	13.49	6.97	17.12	8.92	
5"	141.30	127.00	3.40	2.69	6.55	5.30	9.53	7.70	15.88	12.83	19.05	15.12	
6"	168.28	152.40	3.40	3.85	7.11	8.48	10.97	13.08	18.24	21.75	21.95	25.01	
8"	219.08	203.20	3.76	7.42	8.18	16.24	12.70	25.22	23.01	45.69	22.23	46.96	
10"	273.05	254.00	4.19	13.36	9.27	28.80	12.70	39.46	28.58	88.80	25.40	84.42	
12"	323.85	304.80	4.57	22.40	9.53	43.20	12.70	57.57	33.32	151.04	25.40	122.08	
14"	355.60	355.60	4.78	29.60	9.53	58.40	12.70	77.82	35.71	218.82	-	-	
16"	406.40	406.40	4.78	38.40	9.53	76.00	12.70	101.28	40.46	322.66	-	-	
18"	457.20	457.20	4.78	48.80	9.53	96.80	12.70	129.00	45.24	459.52	-	-	
20"	508.00	508.00	5.54	72.40	9.53	120.00	12.70	159.92	49.99	629.48	-	-	
22"	558.80	558.80	5.54	88.00	9.53	144.80	12.70	192.97	53.97	820.05	-	-	
24"	609.60	609.60	6.35	121.60	9.53	172.80	12.70	230.28	59.51	1079.05	-	-	